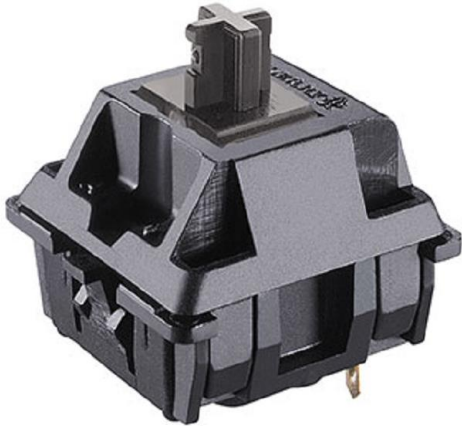


## CHERRY MX SILENT BLACK



*Models may vary from the image shown*

### Silent CHERRY MX-RGB keyswitch with patented (patent pending) noise reduction

Silent CHERRY MX keyswitch - the original with no compromises. The patented (patent pending) noise reduction reliably minimizes any operating noises. This is the most silent form of quality, precision and reliability.

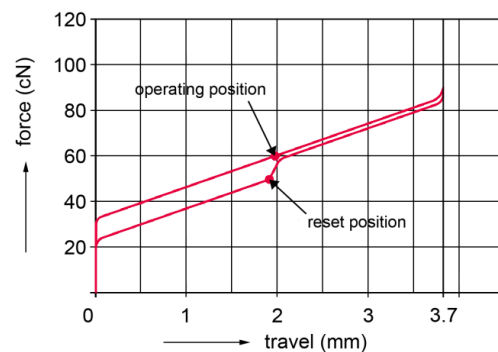
#### Key Benefits

- Black switch: Without pressure point, linear actuation - switching function with a defined force of approx. 60 cN without contact feedback
- Noise-optimized MX keyswitch version with the worldwide unique Gold Crosspoint contact technology.
- The only solution from a single source: patented (patent pending) noise reduction with integrated 2-component stem.
- Reliable reduction of bottom-out and top out noise
- Noise reduction takes place in the glass-fiber reinforced base, regardless of 3rd party solutions on the keyswitch.
- Precision "Made in Germany" with a short bounce time of < 5 ms
- Self-cleaning contacts, resistant to dust and dirt
- Over 50 million strokes per keyswitch without compromising on quality.
- Long-lasting safe switching performance in the renowned "Original CHERRY quality" tried-and-tested a billion times over.

#### Technical Data:

##### Keymodule:

- Switch Type: MX
- Protection Class: IP40
- Operation Characteristics: BLACK SWITCH SILENT Linear (60 cN)



- Fastening: Product dependent, see table "Models"
- Switching Voltage: 12 VAC/DC max.
- Switching Current: 10 mA AC/DC max.
- Dielectric Strength: 500 V / 50Hz
- Durability: > 50 million actuations
- Contact Configuration: Single-pole contact
- Actuator Travel: 3.7 -0.4 mm
- Pretravel: 1.9 ± 0.6 mm
- Initial Force: 30 cN min.
- Actuation Force: 60 ± 20 cN
- Bounce Time: < 5 ms (during actuation with 0,4 m/s)
- Standard Lead Spacing: 19.05 mm (16 mm min.)
- Lighting: Product dependent, see table "Models"
- Decoupling Diode: Product dependent, see table "Models"
- Wire Jumper: Product dependent, see table "Models"
- Insulation Materials: Thermoplastics (min. UL 94 HB)
- Spring: Stainless steel
- Contacts: High-quality gold alloy
- Storage Temperature: -40°C to 70°C
- Operating Temperature: -10°C to 70°C
- Humidity: Storage: average <50% max. 3 months / 75% max. 15 days, operation: 5% to 95% without condensation

#### Warranty:

- 2 Years



**Models:**

	Product Name	Part Number	Fastening	Lighting	Decoupling Diode	Wire Jumper
1	CHERRY MX SILENT BLACK	MX3A-11DN	Snap fastening in frame	no	yes	no
2	CHERRY MX SILENT BLACK	MX3A-11DW	Fixing pins in the printed circuit board	no	yes	no
3	CHERRY MX SILENT BLACK	MX3A-11GN	Snap fastening in frame	LED in green	no	no
4	CHERRY MX SILENT BLACK	MX3A-11GW	Fixing pins in the printed circuit board	LED in green	no	no
5	CHERRY MX SILENT BLACK	MX3A-11JN	Snap fastening in frame	no	no	yes
6	CHERRY MX SILENT BLACK	MX3A-11JW	Fixing pins in the printed circuit board	no	no	yes
7	CHERRY MX SILENT BLACK	MX3A-11NN	Snap fastening in frame	no	no	no
8	CHERRY MX SILENT BLACK	MX3A-11NW	Fixing pins in the printed circuit board	no	no	no
9	CHERRY MX SILENT BLACK	MX3A-11RN	Snap fastening in frame	LED in red	no	no
10	CHERRY MX SILENT BLACK	MX3A-11RW	Fixing pins in the printed circuit board	LED in red	no	no
11	CHERRY MX SILENT BLACK	MX3A-11YN	Snap fastening in frame	LED in yellow	no	no
12	CHERRY MX SILENT BLACK	MX3A-11YW	Fixing pins in the printed circuit board	LED in yellow	no	no

Cherry Americas, LLC  
11200 88th Avenue  
Pleasant Prairie, WI 53158  
USA

Phone: 262.942.6508

Internet: [www.cherryamericas.com](http://www.cherryamericas.com)

E-Mail: [keyboardsupport@cherryamericas.com](mailto:keyboardsupport@cherryamericas.com)

The manufacturer accepts no liability for errors or non-availability, and reserves the right to change specifications without prior notice. Technical data relates to product specifications only. Features may differ from those described. Only drawings combined with product specifications shall be deemed binding.

Rev Date: Feb. 10, 2018